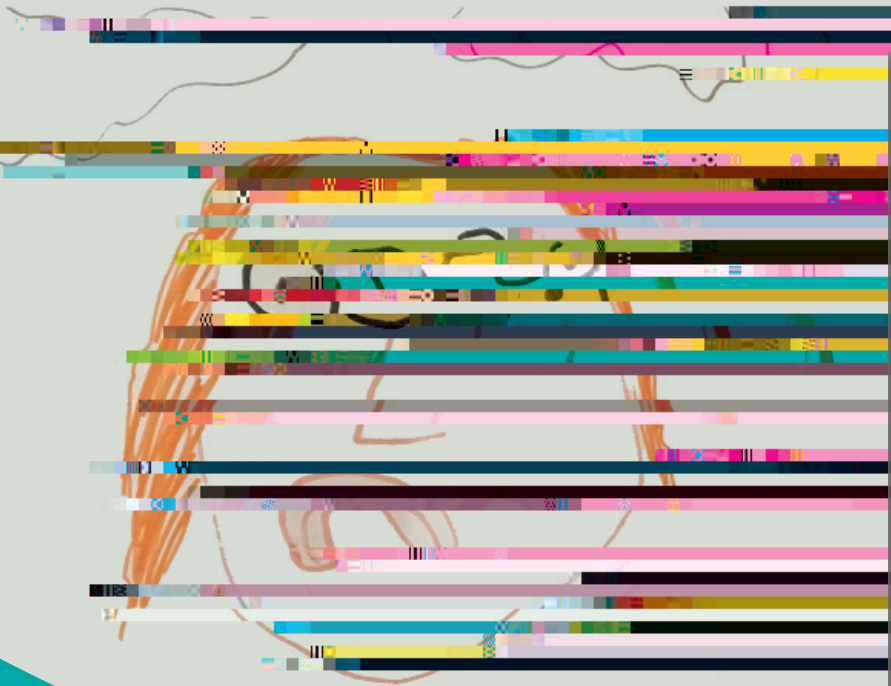




University of Bedfordshire

P D N  
C L N  
P S M  
13 N 2024  
11.00 - 12.30  
D H T  
S C



Hannah Todman is a registered social worker, practice educator and workforce development manager. She is accredited by the National Assessment and Accreditation System (NAAS), with 14 years of frontline practice experience within substance use services. The focus of Hannah's practice has been supporting children and families affected by a loved one's substance use.

Hannah's completed PhD, undertaken at Manchester Metropolitan University, focuses on the experiences of children (aged 7-16) who live with parental substance misuse (PSM). She sought to understand what this group of children need, from their perspective, by way of support. The research also included focus groups with frontline professionals from across a children's workforce, to understand the needs of frontline practitioners in their endeavour to support and respond to the needs of children living with PSM.

In this webinar, Hannah will present her findings, in which the voices of children are privileged at the heart of the research. She will discuss the multiple risk factors experienced by children, and the multiple protective factors needed to buffer against the negative impact of PSM. She will set out the key messages for practice when working with children living with PSM, and introduce the principles for a model of practice for children and a training model for frontline sta

Image courtesy of Hannah Todman

Places are limited so you will need to book by 30th October 2024. Local authority bookings may need to be made via your Learning and Development Department. For all other bookings, please contact the MRC Events Organiser at University of Bedfordshire, Gemma Wilson, at: @